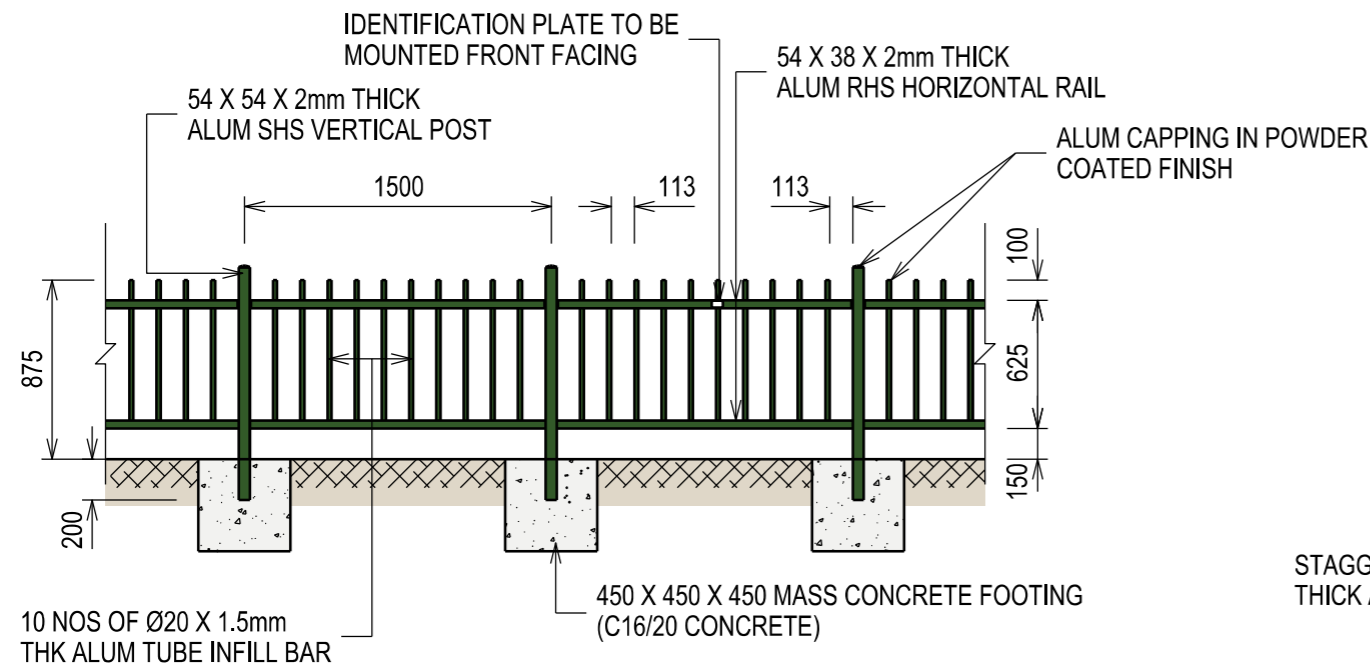


# PEDESTRIAN ALUMINIUM ALLOY RAILINGS - TYPE F

JOB No: 0414-NYI-0196 ID :

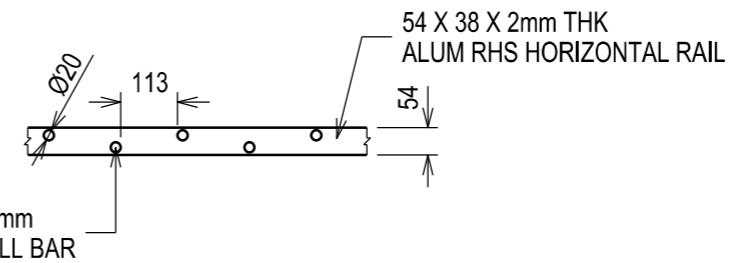
**DELIVERY DATE**

Morning  Afternoon  
 Before  After Time:



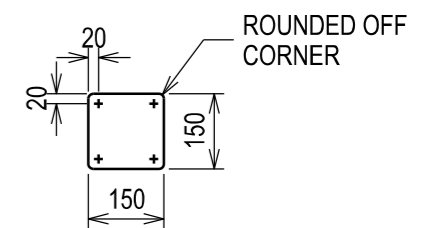
**TYPE F ALUMINIUM ALLOY RAILINGS**

SCALE 1:50



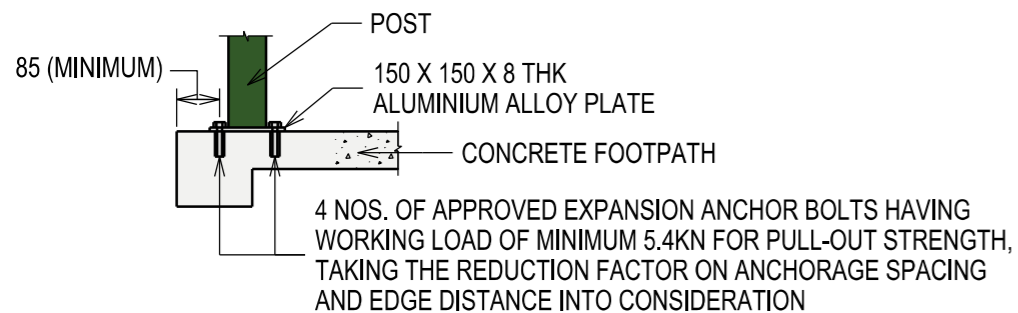
**PART PLAN OF INFILL BAR ARRANGEMENT (TYPE F)**

SCALE 1:20



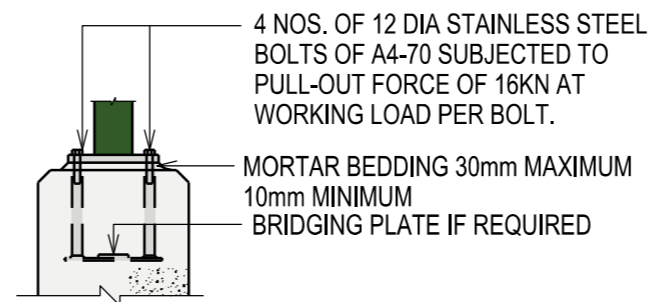
**DETAIL OF BASE PLATE**

SCALE 1:20



**ANCHORAGE DETAIL OF POST TO FOOTPATH**

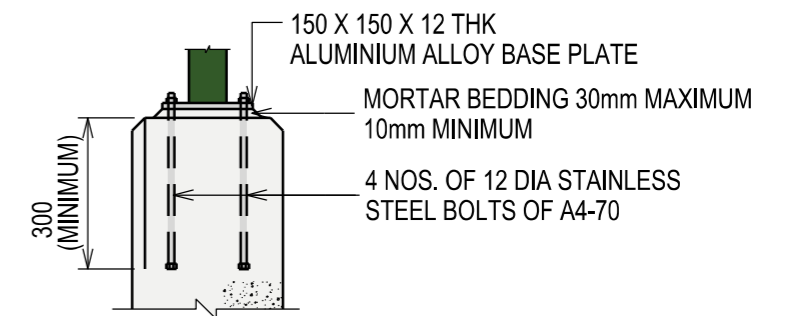
SCALE 1:20



**TYPICAL DETAIL OF RAILING FIXING TO CONCRETE STRUCTURE BY CAST-IN CRADLES**

Note : Cast-in cradles may be used as an alternative when the embedded depth is not available

SCALE 1:20



**TYPICAL DETAIL OF RAILING FIXING TO CONCRETE STRUCTURE BY INDIVIDUAL ANCHORAGE FIXINGS**

SCALE 1:20



**METAL IMAGE**  
 18 Tampines Industrial Crescent #07-02,  
 SPACE@Tampines, Singapore 528605  
 Tel: 6312 1012 Fax: 6385 4233  
 Email: sales@metalimageinc.com  
 Website: www.metalimageinc.com

CLIENT

PROJECT TITLE

DESIGNER: NAING

ARTWORK RECEIVED:

PRINTED BY:

LTA RAILING

SALES: JENNY

ARTWORK APPROVED:

ARTWORK DATE: 14/04/2020

ARTWORK FINISHED:

PRODUCTION BY:

DELIVERY DATE:

SCALE:

UNITS: MM